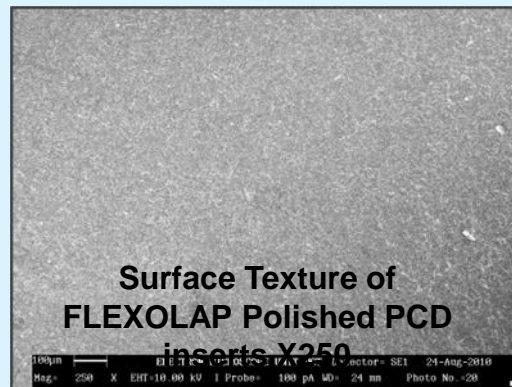
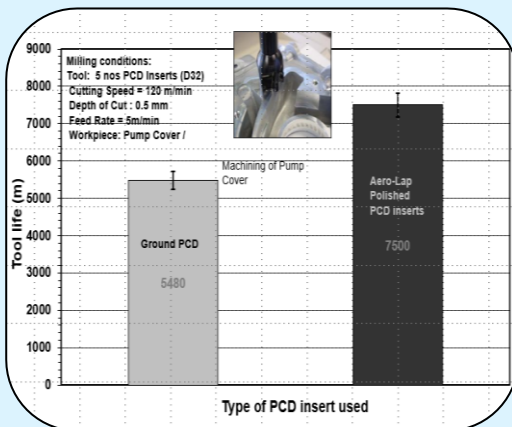


Surface Texture of Un-Polished PCD inserts X250



Surface Texture of FLEXOLAP Polished PCD inserts X250



PCD Tool Life Improvement of FLEXOLAP POLISHED PCD Inserts on Pump housing

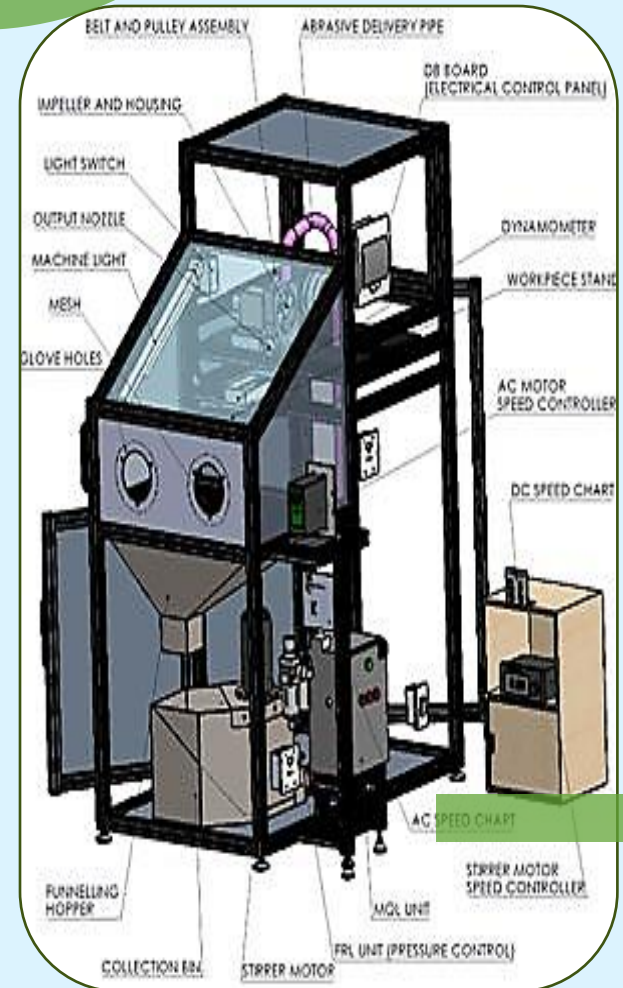
WZL-AMS (Advanced Manufacturing Solutions) Pte Ltd has been established by Industry/Research expert after gaining 34 years of Industry/Research/ Academic experience in the field of Advanced Manufacturing. The WZL-AMS offer technology training to enhance the competitiveness of the Industrial workforce. The training programs was nurtured, in close partnership with the WZL Germany. The training would power up the practicing engineers to apply the manufacturing-sciences based approach for resolving the manufacturing challenges and promote a significant cost savings.

Contact:

Dr.Ramesh Kuppuswamy b.eng (hons), M.tech PhD (Singapore) SM SME, USA
WZL Advanced Manufacturing Solution,
 4C-717 HRBR layout Kalyan Nagar,
 Bangalore 560043 India,
Business Registration Number:
 U28221KA2023PTC174095; Phone no:
 +91 8310599701, URL: www.wzlams.com
 Email: Ramesh.kuppuswamy@uct.ac.za

Emeritus professor, Department of Mechanical Engineering, University of Cape Town, South Africa 7701 Phone no: +27 21 6504872

WZL-Advanced Manufacturing Solution (Singapore Branch)
 268D #13-01 Compassvale Link,
 Singapore
BUS. REGN: UEN: 53471036X
Email: Ramesh@e.ntu.edu.sg
Phone: +65 96275884/+65 81126806



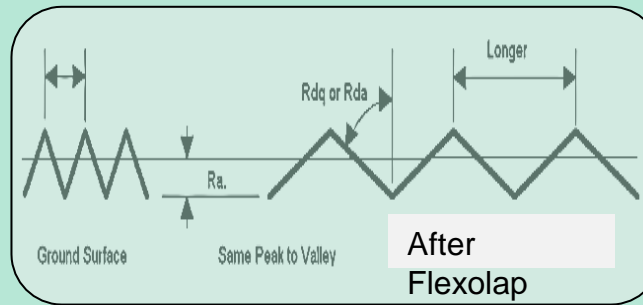
FLEXOLAP80 Nanometric Polishing Machine





- ❑ Flexolap80 - Max. Work Piece size 300x300mm
- ❑ The Flexolap80 makes it possible to achieve a mirror finish on any profile.
- ❑ Components that used to be polished by hand over many hours, can now be lapped in minutes.
- ❑ The shape and geometry of the component is not altered.
- ❑ Easy lapping of complex profiles.

- ❖ The Flexolap process is a fine process that works best on hard materials.
- ❖ It removes a small amount of material completely replacing the surface texture as shown (NTS):



- ❖ The measured Ra value is often halved or further reduced after Flexolap
- ❖ The shallower slope reflects light better to give a “shiny” finish.
- ❖ The broad peaks of the shallower slope makes a more hard wearing and longer lasting surface.



TUNGSTEN CARBIDE PUNCH BEFORE AND AFTER FLEXOLAP POLISHING



A RAND5 COIN WAS POLISHED AT HIGH VELOCITY AND HIGH WETNESS FOR 5 MINUTES AND SURFACE ROUGHNESS (R_a) DECREASED FROM $0.34\mu\text{m}$ TO $0.075\mu\text{m}$